

UserID:

Password:

[Login](#)

[Home](#) [Product/Availability](#) [General Info](#) [ROHS \[PDF\]](#) [Part Conversion Chart \[PDF\]](#) [Sitemap](#) [Contact](#)

Product Lines
[> Premium Line](#)
[Classic Line](#)
[Basic Line](#)

Premium Line
[BRM](#)
[BRM inch](#)
[BRF](#)
[BRF inch](#)
[PM](#)
[PF](#)
[BRTM](#)
[> BRTM inch](#)
[BRTF](#)
[BRTF inch](#)

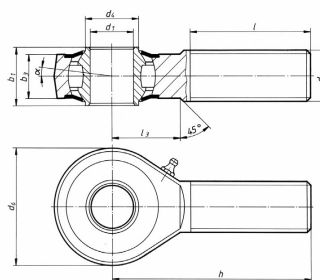
Product Search

[Advanced Search](#)
[-Clear-](#)

DURBAL BRTM inch

Male thread greasable, low maintenance, shields dimensions in inches

Heavy-duty rod ends with integral self-aligning roller bearing



[Click To Enlarge](#)

rod end housing:
 forged steel, tempered, case hardened, bearing race, ground and lapped, rolled thread, surface galvanized
inner ring:
 ball bearing steel, hardened, superfine ground
lubrication:
 Polyrex EP2 or soap complex
 temperature range
 -20 °C to +120 °C
lubrication nipple:
 DIN 71412 H1
bearing clearance:
 15 - 30 µm radial
tolerances: [Tolerances \[PDF\]](#)

Volume Pricing Chart							
Qty	1-10	11-20	21-75	76-150	151-225	226-300	301+
Discount	0%	4%	5%	6%	7%	8%	9%

Please login to view pricing.

Part Number	Description
97-03-0130	Rod End: BRTM 5/8 RH, MODIFIED WITH 0.562 - 32 UN-2A THDS, (9/16)
97-03-0131	Rod End: BRTM 5/8 LH, MODIFIED WITH 0.562 - 32 UN-2A THDS, (9/16)
BRTM 1/1-00-501	Rod End: Bore - 1 inch Thd. 1 X 12 UNF RH
BRTM 1/1-00-502	Rod End: Bore - 1 inch Thd. 1 X 12 UNF LH
BRTM 1/1-01-501	Rod End: Bore - 1 inch Thd. 1 X 14 UNF RH
BRTM 1/1-01-502	Rod End: Bore - 1 inch , Thd. 1 X 14 UNF LH
BRTM 1/2-00-501	Rod End: Bore - 1/2 in THD 0.5 X 20 UNF. RH
BRTM 1/2-00-502	Rod End: Bore - 1/2 in BORE, THD 0.5 X 20 UNF. LH
BRTM 3/4-00-501	Rod End: Bore - 3/4 inch Thd. 3/4 X 16 UNF
BRTM 3/4-00-502	Rod End: Bore - 3/4 inch Thd. 3/4 X 16 UNF LH
BRTM 5/8-00-501	Rod End: Bore - 5/8
BRTM 5/8-00-502	Rod End: Bore - 5/8